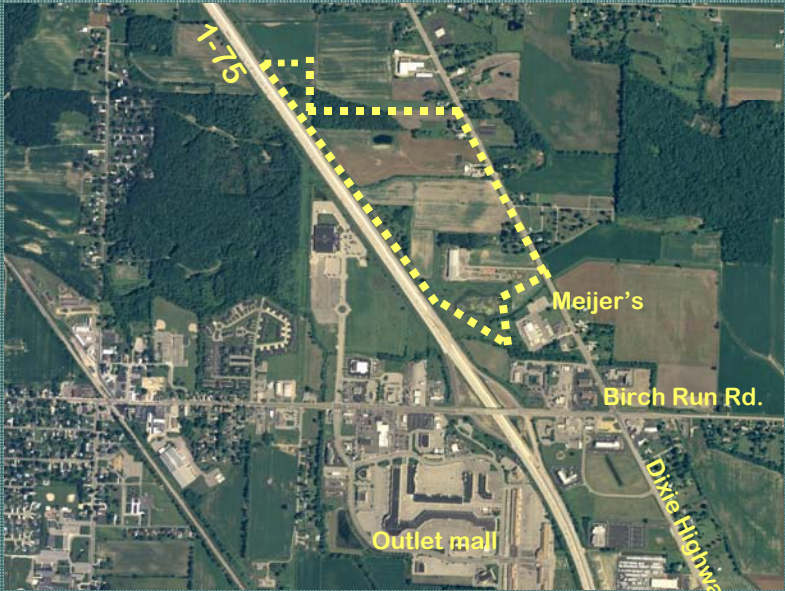


# 100 Acre Birch Run MI I-75 Commercial Development

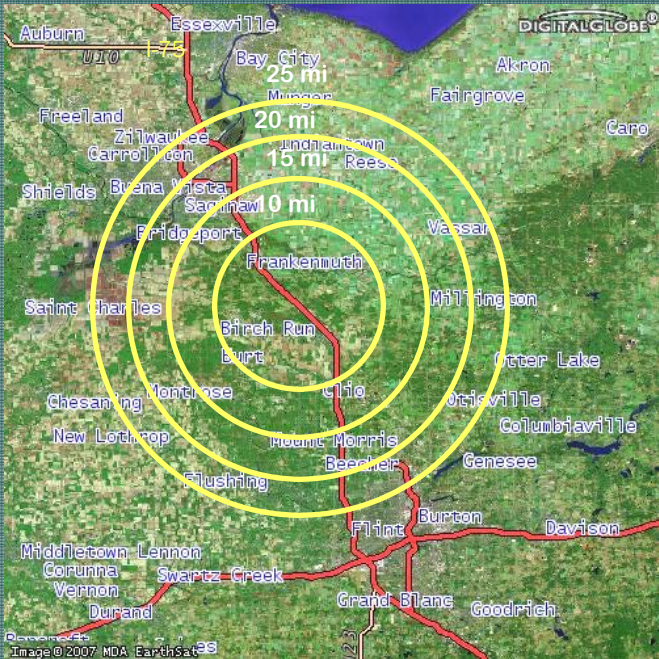
The Birch Run MI I-75 Commercial Development is located in a thriving family friendly community located at the gateway to beautiful Northern Michigan. The development is positioned at the I-75 Exit leading to Frankenmuth, MI, which is Michigan's number one tourist attraction. This 100 acre Commercial Development lays directly adjacent to I-75, and a new Meijer's center is currently under construction directly across the street this exit is also home to numerous hotels, restaurants and one of the largest outlet malls in the country. The entire 100 acres or out lots are available for sale, as land leases, or as build to suits. Call for pricing and additional information.

## Demographics:

	10 mile	15 mile	20 mile	25 mile
2006 Total Daytime Population	67,404	239,040	509,688	705,802
2006 Total Households	25,526	89,384	199,903	277,787
2006 Average Household Income	\$58,583	\$56,351	\$55,790	\$56,351



Outline of property indicated by yellow dotted line



Demographic image with 10,15, 20 and 25 mile markers.

# 100 Acre Birch Run MI I-75 Commercial Development



## Contact Information

**BW VOORHEIS, INC.**

Byron W Voorheis, III  
PO Box 310 Clio MI 48420  
Phone (810) 241-9300

E-mail: [billvoorheis@bwvoorheis.com](mailto:billvoorheis@bwvoorheis.com)

Web Address:  
[www.BWVOORHEIS.com](http://www.BWVOORHEIS.com)





“ Birch Run is midway between Flint and Saginaw on I-75. We are located at Exit 136, which is the second busiest exit on I-75 (the first is Orlando, Florida). Within minutes of two major cities, Flint and Saginaw, you will find quiet residential streets, a historic hometown and a rural area adjacent to a major commercial area.” --Birch Run Area Chamber of Commerce

[www.birchrunchamber.com](http://www.birchrunchamber.com)